



## M700/M750 Animal Thermometers

GLA Agricultural Electronics, the leader in the animal-health electronic thermometer industry, offers the latest advancements in digital animal thermometry. The M700 series revolutionizes the way you take and record animal temperature!

*Accurate*  
*Dependable*  
*Affordable*



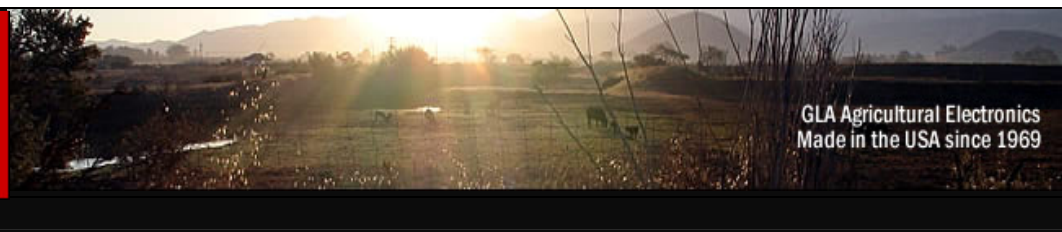
**M700 Digital Thermometer**  
Relied on by ranchers and  
dairymen worldwide.

**M750 Digital Thermometer**  
Includes RFID ear tag input and  
serial data transfer to your computer.

The **M700** thermometer series gives you all of the high quality features that GLA is known for and many new features that customers are asking for:

- Low battery indicator
- Confirmation when toggling Fahrenheit or Celsius
- Confirmation when battery is fully charged
- Error indication when probe is damaged or detached

The **M750** features RS232 serial data transmission direct to your PC. Temperature readings are automatically time/date-stamped and ear tag number manually keyed into your PC. Better yet, plug your RFID reader into the M750 and automatically record RFID-compatible ear tag numbers right along with time, date and temperature. Save time, save money! See reverse side for product specifications.



GLA Agricultural Electronics  
Made in the USA since 1969

## GLA Thermometer Features

---

### M700 Thermometer

- Temperatures in 8 to 15 Seconds
- Degrees F or C selectable
- Ambient temperature mode
- Peak temperature mode with indicator
- Self re-setting fuse
- Large LED Display
- Ambient light sensing
- Calibration Check position
- Shows Actual Battery Voltage
- Indicates probe not attached or damaged
- Auto shut-off
- Rechargeable battery with charging indicator

### M750 Thermometer

- All of the features of the M700 *plus*:
- 1024 Temperature Memory Positions
- RS232 port built into unit
- Serial communication cable included
- Push-button data storage
- Data stored as: Tag #, Date, Time, Temp
- Baud rate 9600
- ASCII files import easily into spreadsheets
- Programmable Real Time Clock
- RS232 port for your RFID reader.
- Read Allflex® ear tags. Numbers displayed and stored
- Programmable peak temp time, inactivity time and F/C

---

### M207 Probe Options

- Straight, 4.0" (100 mm) insertion
- Straight, 3.0" (75mm) insertion
- Straight, 1.5" (38mm) insertion
- Angled 37.5°, 4.0" (100 mm) insertion
- Angled, 37.5°, 3.0" (75mm) insertion



---

## GLA Thermometer Systems

GLA thermometer systems include: M700/ M750 Digital Thermometer, M207 Probe, C725 Charger (110-230 Volt; compatible for US and International), and Instruction Manual. The M750 includes one RS232 communication cable.

### Warranty

M700 / M750 Thermometer - two years  
M207 Probes - one year

## Why Customers Insist on GLA Thermometers

- Fast: Only 8 to 15 second response time
- Large, easy to read LED display
- Accurate to within 0.1 degree
- Rugged: Built to take rough handling and daily use
- Service: All GLA thermometers and probes are repairable
- Reputation: Most pharmaceutical studies require GLA thermometers
- Accuracy and Calibration statements available free on request
- Detailed instructions available in English and Spanish
- Quick use instructions in English, Spanish or French
- Friendly, capable customer and technical support
- Designing and manufacturing animal thermometers for over 40 years



*Distributed by*

**MeterMall USA**

11951 Rausch Road • Marysville, OH 43040  
Tel 800.969.0114 • Fax 937.642.4691

[Metermall.com](http://Metermall.com)

